

Architects' & Specifiers' ***Ironmongery Guide***

The Finishing Touches



Doorfit
Our Experience. *Your Solution*

Call now for our new Garage Doors & Entrance Doors brochure

How we can help you? Advice. Supply. Fit.

Perhaps you just want us to supply your new garage or entrance door and you'll arrange the fitting yourself. That's no problem. With Doorfit, you'll find a huge range of products to choose from – as well as expert advice from our friendly team.

Or maybe you'd like us to install your new door for you. In that case our experts are on hand to assist you through the whole process, from initial site survey to completed installation.

If you allow us the privilege of entering your home, we will treat it with care and respect.



Contents

About Us	4
Door Furniture	
Lever Door Handles	6
Pull Handles	13
Accessories	14
Door Closers	15
Hinges	17
Lock Cases	18
Master Keyed Cylinders and Access Control	21

Doorfit

Our Experience. Your Solution



Doorfit has grown as a family business over its 60+ years history. During that time we have built a strong reputation as one of the largest suppliers of architectural hardware in the UK.

With over 30,000 stock lines and more than 50 fully trained staff, we have become the first choice for architects and specifiers looking for an experienced project specification consultancy service, with a proven commitment to service support and delivery

**Reliable,
knowledgeable
and friendly
service with an
extensive range.**



“

Our family business ethos has been handed down through two generations. Product knowledge and customer service are at the very heart of what we do. In the modern world there are many ways you can interact with suppliers but in the end people buy from people, they trust us to get the job done right.

”

Robert Neil, Joint Managing Director

Door Furniture

Our most popular Door Furniture products are all here. If you can't find what you're looking for, please call our Contracts team for more information about our complete range.

Designer Range Lever Door Handles

Our designer lever styles are available in various finishes so please enquire to view the full range of options.

Designer Range Lever Door Handles



Genoa lever on round rose

Finish	Code
Satin/ polished chrome	DP-FCOGEN-SPC



Bologna lever on round rose

Finish	Code
Satin/ polished chrome	DP-FCOBOL-SPC



Catania lever on round rose

Finish	Code
Satin nickel	DP-FCOCAT-SN



Ancona lever on round rose

Finish	Code
Satin/polished nickel	DP-FDEANC-SNNP



Parma lever on round rose

Finish	Code
Polished chrome	DP-FDEPAR-PC



Modena lever on round rose

Finish	Code
Satin/polished nickel	DP-FDEMOD-SNNP



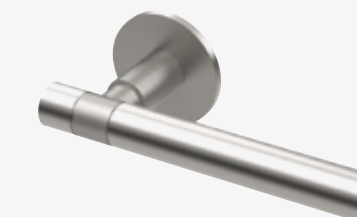
Rimini lever on square rose

Finish	Code
Satin nickel/ polished chrome	DP-FDERIM-SNCP



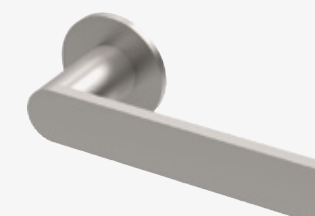
Ferrara lever on round rose

Finish	Code
Satin chrome	DP-FDEFER-SC



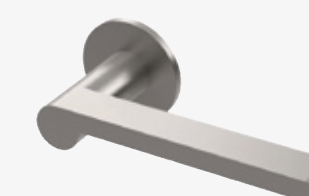
Ravenna Lever on round rose and textured pillar

Finish	Code
Satin stainless steel	DP-019RAV-SSS



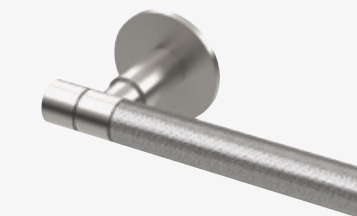
Monza Lever on round rose

Finish	Code
Satin stainless steel	DP-026MON-SSS



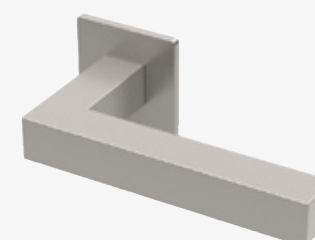
Faenza Lever on round rose

Finish	Code
Satin stainless steel	DP-102FAE-SSS



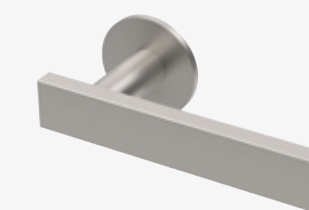
Acerra Lever on round rose with knurled grip

Finish	Code
Satin stainless steel	DP-191ACE-SSS



Siena Lever on square rose

Finish	Code
Satin stainless steel	DP-020SIE-SSS



Modica Lever on round rose

Finish	Code
Satin stainless steel	DP-251MOD-SSS

Specification Range Lever Door Handles

Icknield Suite Stainless Steel

This stainless steel range of door furniture and accessories are compliant with the 'Disability Discrimination Act 2005 (DDA)' and provide a durable, cost effective solution. They are available in satin stainless steel (SSS) or polished stainless steel (PSS).



Grade 3 tested, DDA compliant, 19mm diameter stainless steel safety lever handle on round rose

Finish	Code
Polished stainless steel	DP219/0
Satin stainless steel	DP219/0



DDA compliant 19mm diameter stainless steel long plate latch furniture

Finish	Code
Polished stainless steel	DP219/1
Satin stainless steel	DP219/1



DDA compliant 19mm diameter stainless steel lever lock furniture

Finish	Code
Polished stainless steel	DP219/1L
Satin stainless steel	DP219/1L



DDA compliant 19mm diameter stainless steel lever oval profile lock furniture

Finish	Code
Polished stainless steel	DP219/1U
Satin stainless steel	DP219/1U



DDA compliant 19mm diameter stainless steel bathroom furniture

Finish	Code
Polished stainless steel	DP219/1B
Satin stainless steel	DP219/1B



DDA compliant 19mm diameter stainless steel Euro Lock furniture

Finish	Code
Polished stainless steel	DP219/1P
Satin stainless steel	DP219/1P

Our same day product service for Queen Elizabeth hospital



“The guys at Doorfit are always there when we need something urgently.”
Steve Gardner,
Building Manager, Engie

The Queen Elizabeth Hospital is one of the UK's flagship PFI projects and has the largest co-located critical care unit of any hospital in the world. Since opening in Birmingham in 2010, facility management company Engie have utilised our support services to ensure the hospital is kept fully operational 24/7. No small challenge when the NHS is under such pressure to cope with the UK's ageing population. Doorfit work daily with the team at Engie to source and stock key products, providing a same day service as and when needed.

Ickniel Suite Aluminium

This aluminium range of door furniture and accessories are compliant with the 'Disability Discrimination Act 2005 (DDA)' and provide a durable, cost effective solution.



DDA compliant 19mm diameter satin aluminium safety pattern lever handles on round roses

Finish	Code
Satin aluminium	DP119/0



DDA compliant 19mm diameter satin aluminium long plate latch furniture

Finish	Code
Satin aluminium	DP119/1



DDA compliant 19mm diameter satin aluminium lever lock furniture

Finish	Code
Satin aluminium	DP119/1L



DDA compliant 19mm diameter satin aluminium lever oval profile lock furniture

Finish	Code
Satin aluminium	DP119/1U



DDA compliant 19mm diameter satin aluminium bathroom furniture

Finish	Code
Satin aluminium	DP119/1B



DDA compliant 19mm diameter satin aluminium Euro Lock furniture

Finish	Code
Satin aluminium	DP119/1P

Aluminium



Contract lock furniture

Finish	Code
Satin aluminium	DP21L



Contract latch furniture

Finish	Code
Satin aluminium	DP22



Contract euro profile lock furniture

Finish	Code
Satin aluminium	DP21E



Contract oval profile lock furniture

Finish	Code
Satin aluminium	DP21U



Contract bathroom lock furniture

Finish	Code
Satin aluminium	DP23B



Travelodge Hotels have been a key account customer for many years. We offer them a 'one stop shop' service across their complete hotel portfolio, managing everything from lighting and plumbing support to architectural hardware maintenance.

As part of this integrated service we often need to source products which have been discontinued or need to be manufactured to bespoke requirements, making us a key support to their facilities management teams. This close relationship enables them to keep as many rooms available as possible throughout the year.

Doorfit has also supplied many of the refurbished and new build hotels as Travelodge has heavily invested to upgrade their venues over recent years.

Pull Handles

Stainless Steel



Monza 425mm pull handle

Finish	Code
Satin stainless steel	DP-26MON-425-SSS



Ravenna 425mm pull handle

Finish	Code
Satin stainless steel	DP19RAV-425-SSS



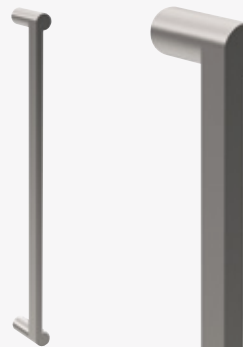
Modica 425mm pull handle

Finish	Code
Satin stainless steel	DP-25MOD-425-SSS



Siena 425mm pull handle

Finish	Code
Satin stainless steel	DP-20SIE-425-SSS



Faenza 425mm pull handle

Finish	Code
Satin stainless steel	DP-10FAE-425-SSS



Icknield bolt through pull handle
- sizes from 150mm to 425mm

Finish	Code
Polished stainless steel	DP250BF
Satin stainless steel	DP250BF



Icknield back to back fix pull handle
- sizes from 150mm to 425mm

Finish	Code
Polished stainless steel	DP250BB
Satin stainless steel	DP250BB



Icknield pull handle on roses
- sizes from 150mm to 425mm

Finish	Code
Polished stainless steel	DP250CF
Satin stainless steel	DP250CF



Icknield bolt through Guardsman pull handle
sizes from 300 to 425mm

Finish	Code
Polished stainless steel	DP254BF
Satin stainless steel	DP254BF

For expert advice please call our Contracts team on 0121 523 4171

Here is a small selection of our door furniture accessories.
Please contact our Contract team for more information
about our complete range.



Disabled turn and indicator on
52mm diameter roses

Finish	Code
Polished stainless steel	DP2DBT
Satin stainless steel	DP2DBT



Bathroom turn and indicator on
52mm diameter roses

Finish	Code
Polished stainless steel	DP2BT
Satin stainless steel	DP2BT



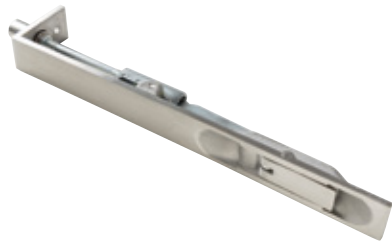
52mm diameter keyhole escutcheon

Finish	Code
Polished stainless steel	DP1EL
Satin stainless steel	DP1EL
Satin aluminium	DP1EL



75mm diameter toilet symbols

Finish	Code
Polished stainless steel	DP264CD
Satin stainless steel	DP264CD
Satin aluminium	DP264CD



Flush bolt (various sizes available)

Finish	Code
Polished stainless steel	DP268
Satin stainless steel	DP268
Satin aluminium	DP268



Flush pull

Finish	Code
Polished stainless steel	DP296
Satin stainless steel	DP296

Door Closers



DORMA's comprehensive range of CE marked door closers offer premium build quality. Correct specification is critical, with doors and their associated architectural ironmongery accounting for up to 80% of total maintenance costs.

Specification Door Closers



Rack and Pinion Electromagnetic Hold Open Door Closer The DORMA TS 73 EMF is a combination of hydraulic door closer and electromagnetic hold-open unit. In conjunction with an alarm / smoke detection system, the TS 73 EMF can be used as a hold-open / free swing door closer for fire and smoke check doors. Successfully third party tested to BS EN1155 CERTIFIRE Approved CF117

Finish	Code
Polished stainless steel	TS73EMF
Satin stainless steel	TS73EMF
Sprayed silver	TS73EMF



Cam-action door closers with slide channel The TS 93 cam action door closer system provides a high-quality architectural solution for all project application requirements, featuring the DORMA heart-shaped cam to ensure exceptional ease of opening. Successfully Third Party Tested to BS EN1154 CERTIFIRE Approved CF119. With Backcheck and Delayed Action.

Finish	Code
Polished stainless steel	TS93
Satin stainless steel	TS93
Sprayed silver	TS93



Cam-action door closers with slide channel Designed especially for interior applications the DORMA TS92 features the unique Cam action technology and the award winning Contur design for enhanced aesthetics, making this closer an ideal choice for any interior project. Successfully Third Party Tested to BS EN1154 CERTIFIRE Approved CF119

Finish	Code
Polished stainless steel	TS92
Satin stainless steel	TS92
Sprayed silver	TS92



Concealed slide channel door closer with cam-action technology The DORMA ITS 96 door closer is designed for concealed installation in the door leaf and frame. Suitable for almost every type of door, it offers a wide variety of functions and flexibility combined with a high level of quality. Successfully third party tested to BS EN1154 CERTIFIRE Approved CF 140

Finish	Code
Polished stainless steel	ITS96
Satin stainless steel	ITS96
Sprayed silver	ITS96

Specification Range



Transom concealed door closer The DORMA RTS 85 transom concealed door closer offers a solution for installations where door control must be provided without disturbing the aesthetic appearance of the door. A complete line of accessories is available to accommodate virtually any door and frame configuration. Successfully third party tested to BS EN1154

Finish	Code
Sprayed silver	RTS85



Floor-Concealed Door Closer The BTS75 Series of floor-concealed door closers offer adaptability to almost any installation. The closer's compact body permits its use where a larger closer would be prohibitive. Versatility allows installation in thin slab concrete subfloor construction. A wide selection of interchangeable spindles makes the BTS80 suitable for virtually any floor covering or threshold application.

Finish	Code
Satin stainless steel	BTS75
Polished brass	BTS75



DORMA ED 100 / 250 A Automatic Swing Door Operator Tested to 1,000,000 cycles, the ED 100/250A is a robust yet elegant electromechanical swing door operator for various fields of application. The 'Wind Load Control' function is ideal for windy sites compensating for heavy wind loads. Suitable for emergency escape routes as well as use on fire and smoke check doors.

Finish	Code
Polished stainless steel	ED100
Satin stainless steel	ED100
Sprayed silver	ED100

Contract range

Doorfit's own range of closers offer a durable but cost effective solution.



- CE Tested
- Closing Force Size 2 - 4 (EN1154)
- Maximum Door Width 850 - 1100mm
- Suitable for Doors 40 - 80kg
- Adjustable Check Action
- Adjustable Delayed Action
- Backcheck Standard
- Independent On/Off Latch Action
- Universal Application (fig 1, fig 66 & fig 61)
- Self-handing (fits to left or right hinged doors)

Finish	Code
Polished stainless steel	DP94 PSS
Satin stainless steel	DP94 SSS



- CE Tested
- Closing Force Size 2 - 4 (EN1154)
- Maximum Door Width 850 - 1100mm
- Suitable for Doors 40 - 80kg
- Adjustable Latch Action
- Universal Application (fig 1, fig 66 & fig 61)
- Fire Tested to BS EN1634-1
- 1 ½ Hour Fire Rated (fig 1 only)
- Self-handing (fits to left or right hinged doors)

Finish	Code
Sprayed silver	DP1759 PSS

Hinges

Available in a range of sizes and finishes, our high quality durable specification and contract hinges are sourced from leading manufacturers.

Specification range



Stainless Steel self-lubricating hinge
BS EN 1935/13-CF336 CE marked.

Finish	Sizes	CE Grade	Code
Polished Stainless Steel	102 x 76mm	13	DP550
Satin Stainless Steel	102 x 76mm	13	DP550

Contract range



Stainless steel ball race butt hinges
BS EN 1935 CE marked.

Finish	Sizes	CE Grade	Code
Polished Stainless Steel	76 x 52mm	7	DP520/2
	102 x 76mm	13	DP523/2
Satin Stainless Steel	76 x 52mm	7	DP520/1
	102 x 76mm	13	DP523/1

Radius corner hinges also available

Lock Cases

ASSA Modular - Robust locks for high usage areas, engineered for smooth performance over many years. The innovative modular design gives an immense range of options, suitable for virtually any application. All locks are fully CE marked.



ASSA ABLOY

Specification range

UNION's 2C2 series designed for contract applications, offers a high specification range of mortice lock cases at a competitive price.



DDA 55mm backset euro mortice deadlock case only to bs en 12209

Finish	Code
Satin stainless steel	L2C22S SS
Polished brass	L2C22S PB



DDA 55mm backset 72mm c/c euro mortice sashlock case only to BS EN 12209

Finish	Code
Satin stainless steel	L2C21S SS
Polished brass	L2C21S PB



DDA 55mm backset mortice latch case to BS EN 12209

Finish	Code
Satin stainless steel	L2C23S SS
Polished brass	L2C23S PB



Asa 765 sashlock

Code	Asa 765
------	---------



Asa 500 double escape nightlatch

Code	Asa 500
------	---------



Asa 1498 latch

Code	Asa 1498
------	----------



DDA 55mm backset 72mm C/C euro mortice nightlatch case only to BS EN 12209

Finish	Code
Satin stainless steel	L2C24S SS
Polished brass	L2C24S PB



DDA 55mm backset 72mm C/C euro mortice escape lock case only to BS EN 12209

Finish	Code
Satin stainless steel	L2C26S SS
Polished brass	L2C26S PB



DDA 55mm backset 72mm C/C euro mortice deadlocking nightlatch case only to BS EN 12209 sq forend

Finish	Code
Satin stainless steel	L2C25S SS
Polished brass	L2C25S PB



Asa 1520 escape sashlock

Code	Asa 1520
------	----------



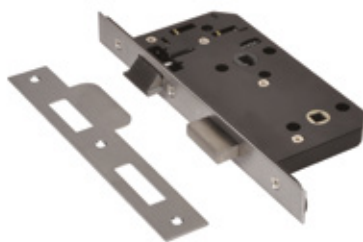
Asa 2788 Deadlock

Code	Asa 2788
------	----------



Asa 8761 emergency nightlatch

Code	Asa 8761
------	----------



DDA 55mm backset 78mm C/C mortice bathroom lock case to BS EN 12209

Finish	Code
Satin stainless steel	L2C27S SS
Polished brass	L2C27S PB

Our anti-ligature fittings for Solihull Mental Health Trust



“ **We were very impressed with the products installed and with the quality of installation by Doorfit.** ”

*Simon Epstein,
Trust Senior Estates Manager*

Our specialist range of Anti-ligature fittings are specifically designed to cope with the demands and safety requirements of the mental health environment. Birmingham and Solihull Mental Health Trust tasked us through Balfour Beatty to design and manufacture adaptations to existing windows to help upgrade their facilities Zinnia, Oleaster and Barberry.



Master Keyed Cylinders and Access Control

Doorfit’s dedicated in house master key facility allows us to supply new master key suites in a few days and replacement keys and locks can be issued within 24 hours. Choosing from a range of medium to high security options our specification team can help you design a bespoke master key suite to fit your needs and budget.

High security range



ASSA Twin Combi 5800 Patented keys and mechanism with Code Level 7 giving maximum protection against unauthorised duplication six pin tumblers plus sidebar mechanism giving full resistance against all known methods of picking Very high security: hardened steel inserts for drill resistance Heavy duty 2.8mm thick keys made from hard-wearing nickel silver Worldwide exclusive side-codes available for end users.

Code Twin Combi

ASSA dp4400 Patented keys and mechanism for maximum protection against unauthorised duplication six pin tumblers plus force-controlled sidebar with false gate position High physical security: hardened steel inserts for drill resistance Heavy duty 2.8mm thick keys made from hard-wearing nickel silver Dual security level option using lower-cost dp2400 cylinders.

Code DP

Contract range



ASSA Ruko High quality value range with five pin tumblers.

Code Ruko

ASSA Flexcore Plus Patented keys and mechanism for protection against unauthorised duplication five pin tumblers incorporating anti-picking features Medium security Heavy duty keys made from hard-wearing nickel silver.

Code Flexcore

For expert advice please call our Contracts team on **0121 523 4171**

Our room access control system for students



ASSA Cliq Remote

CLIQ Remote is an electromechanical cylinder with an additional level of security and flexibility, a natural choice for those looking for a modern security solution.

CLIQ Remote combines a modern mechanical basic platform with an advanced electronic function. A major advantage of CLIQ Remote is the distance function. This locking system can change access and permission at a distance. For example, you can sit in Stockholm and, through the Web-manager give access to your keys via the programming terminal. A contractor in the North of Sweden may get access to a facility, maybe an antenna or a mast, by programming his/her key in a wall readers at the facility.



ASSA SMARTair™

Lost keys can be very costly. Depending on the circumstance, replacement locks and cylinders may also be required.

Replacing a lost card is a cheaper and easier solution than replacing a lost key. With SMARTair™ access control doors you simply replace the card and reprogramme the system ensuring a more secure solution. And it can be done quicker.

Wireless SMARTair™ access control doors are also more cost effective than standard wired access controlled doors.

With over 60 years' experience of designing and supplying cylinders and keys throughout the world, ASSA is established as the first choice for high security, robust and sophisticated key systems.

Doorfit supplied Prestige Group Ltd with ASSA ABLOY's SMARTair™ Access Control System at the Al-Mahdi Institute, Birmingham. The specification demanded the flexibility to manage both day time and residential student's access to rooms, study areas and communal spaces.

The SMARTair™ System uses Mifare Radio Frequency Identification contactless keyless technology. Allowing pre-programme cards to be issued to students on arrival for their period of study. The SMARTair™ system offers ongoing flexibility; new doors, new users and new access rights can easily be incorporated at any time. The wireless system chosen by the Institute allows updates and attendance records to be done in real time. Retained cards can also be easily taken out of circulation to maintain the security of the building.





- *Architectural Hardware*
- *Garage Doors*
- *Entrance Doors*
- *Locksmiths*
- *Sliding Door Gear*

For sales or advice call us on

0121 523 4171

Contact us

Icknield House
Heaton Street
Birmingham
B18 5BA

Email us info@doorfit.co.uk

Visit us www.doorfit.co.uk

Opening Hours

Monday to Friday 8.00am – 5.00pm
Saturday 9.00am – 12.30pm
Sunday – Closed

Socialise with us



Search Doorfit